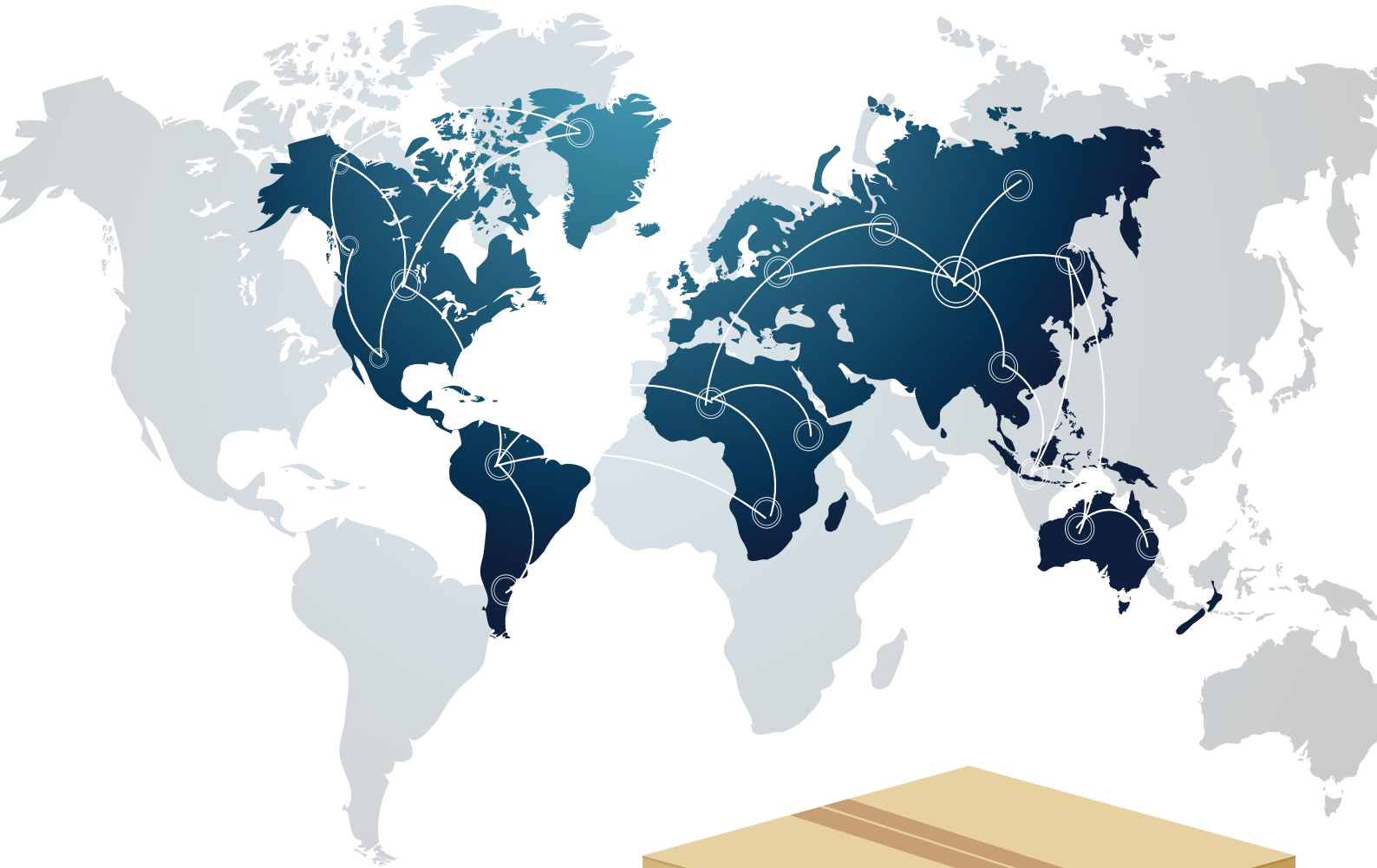




SHOCKINDICATOR ENTERPRISE

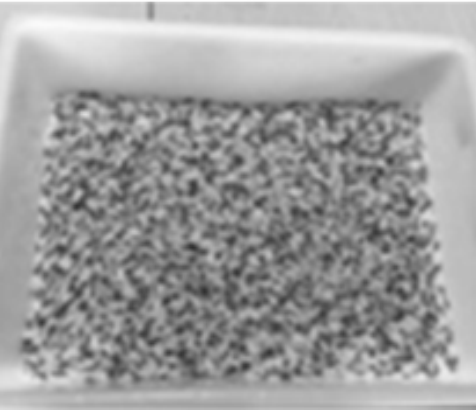


SHOCKINDICATOR ENTERPRISE

SHOCKINDICATOR ENTERPRISE CO.,LTD.

is a manufacturer in Taiwan with products under the logistic indicators and shock indicators. Through all these years of efforts, our products, with high quality & competitive prices, have been exported to worldwide markets including Eastern and Western Europe, Southern & Northern Europe, North America as well as Middle East.



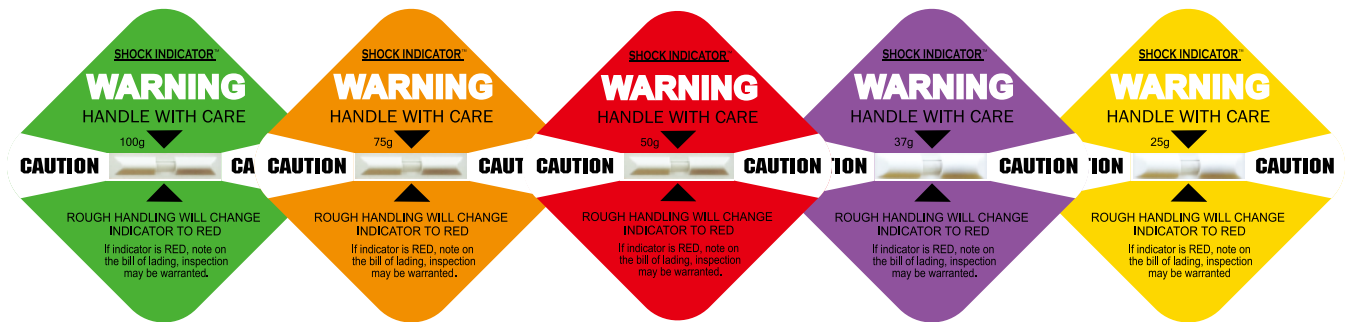


Our company has been specialized in supplying professional logistic indicators, which includes Shockindicator (impact indicator)



However, our policy is “To offer the lowest price and the best customer support”. We sincerely welcome customers to cooperate with us to develop rewarding business partnership.

SHOCKINDICATOR



Product brief introduction

Shockindicator indicate possible damage during transit.

Highly visible Shockindicators indicate when an excessive impact occurs that can potentially damage products.

Shockindicator includes 3 parts: backing paper, tube and sticker.

The main part tube is filled with red liquid. When goods are still, liquid also keeps still. Otherwise, violent shock and impact exceeds its G value, then impact breaks the surface tension of liquid and releases the red liquid.

Therefore, your customers and handlers will know clearly that goods are influenced by violent shock and impact during transit.

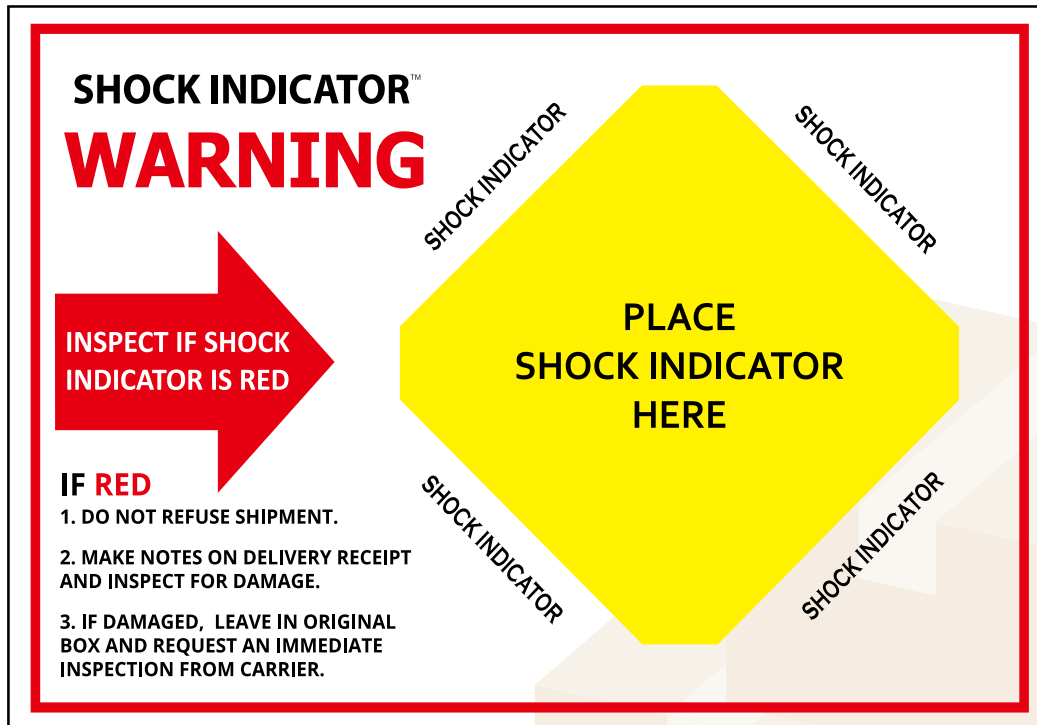
However, Shockindicator as a visual reminder to handle with care as carriers know the package is being monitored.

Data Parameter:

Dimension	97mm*97mm (3.8in x 3.8in) (Label)
Working temperature	-18°F / -28°C to 158°F / 70°C
Sensitivity Range	25G, 37G, 50G, 75G, 100G
Induction range	From 25G ~ 100G
Tolerance	± 15%
Shelf life	Two years
Packing	50pcs/box,1600pcs/carton

Shockindicator (Companion Label)

Size: 209 x 146 mm



Shockindicator selection guide

Shipment Weight LBS / Size	0-1 Cube Feet	1-5 Cube Feet	6-15 Cube Feet	16-50 Cube Feet	50+ Cube Feet
0-10	Green 100G				
11-25		Orange 75G			
26-50			Red 50G		
51-100				Purple 37G	
101-250					Yellow 25G
*250-100					
*1000+	-----				

EXPECTED DROP HEIGHT FOR SHOCKWATCH ACTIVATION

Color Label	YELLOW L-65	PUPRLE L-55	RED L-47	ORANGE L-35	GREEN L-30
Under 100 LBS	----	12-18"	12-24"	24-36"	36"-OVER
Over 100 LBS	6-12"	8-16"	12-18"	----	----

Benefits:

- Provides indisputable evidence of mishandling or improper storage.
- As a visual deterrent against improper handling.
- Reduces mishandling in transport and storage.
- Notify the recipient to inspect contents before acceptance.
- Confirms the validity of the package.



TILTINDICATOR



Product brief introduction

TILTINDICATOR is applied to the packaging and provides evidence of mishandling if the shipment is tilted.

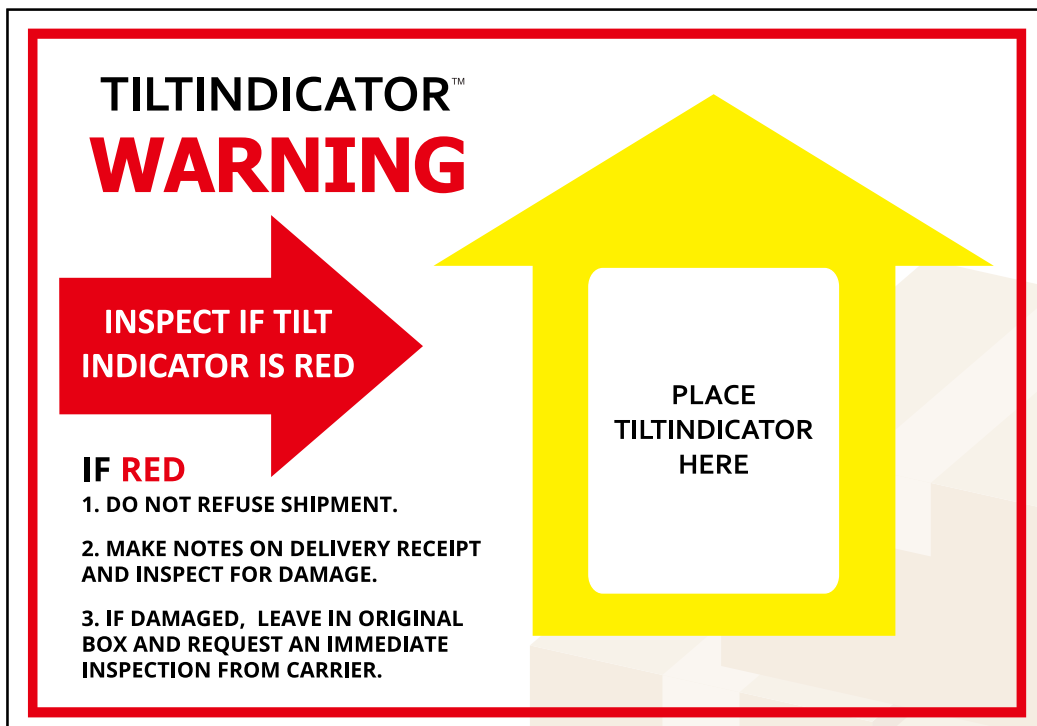
Provides undeniable evidence of mishandling, as a visual reminder to handle with care as carriers know the package is being monitored.

Data Parameter:

Activation Angle	80° ± 5° from vertical
Monitoring range	Single plane
Temperature Tolerance	-40°F / -40°C to 140°F / 60°C
Components:	Acrylonitrile-Butadiene-Styrene copolymer
Shelf Life	2 years

Shockindicator (Companion Label)

Size: 209 x 146 mm



The graphic shows a white rectangular label with a red border, overlaid on a 3D illustration of a cardboard box. The label contains the following text and graphics:

- TILTINDICATOR™**
- WARNING**
- A red arrow pointing right with the text: **INSPECT IF TILT INDICATOR IS RED**
- A yellow house-shaped outline with a white square in the center containing the text: **PLACE TILTINDICATOR HERE**
- IF RED**
- 1. DO NOT REFUSE SHIPMENT.
- 2. MAKE NOTES ON DELIVERY RECEIPT AND INSPECT FOR DAMAGE.
- 3. IF DAMAGED, LEAVE IN ORIGINAL BOX AND REQUEST AN IMMEDIATE INSPECTION FROM CARRIER.

TUBE



Product brief introduction

Tube of Shock indicator provides a competitive edge by allowing embed impact-sensing technologies directly into their product.

Alerts carriers and promotes more careful handling Reduces incidents of damage.

Recipients can see immediate visual indication of mishandling upon goods Confirms effectiveness of packaging.

Data Parameter:

Working temperature	-18° F / -28° C to 158° F / 70° C
Sensitivity Range	25G, 37G, 50G, 75G, 100G
Induction range	From 25G ~ 100G
Tolerance	± 15%
Shelf life	Two years

Features

- A. Provides indisputable evidence of mishandling or improper storage.**
- B. As a visual deterrent against improper handling.**
- C. Reduces mishandling in transport and storage.**
- D. Notify the recipient to inspect contents before acceptance.**
- E. Confirms the validity of the package.**

Contact information

Seeking International Distributors



 TEL : 886-2-26934697

 Address : 2F., No.32, Ln. 156, Fude 2nd Rd.,
Xizhi Dist., New Taipei City 221, Taiwan

 skype ID : admin_147030

 Email : admin@shock-indicator.com